



Proposed Service Changes

Fall 2018

SUMMARY

The service improvements identified in this proposal are made possible by increased Pikes Peak Rural Transportation Authority (PPRTA) sales tax revenues and additional City General Fund dollars.

These transit enhancements continue Mountain Metropolitan Transit's (MMT) push toward improving our existing customers' experience and attracting new riders by enhancing service levels and reliability within our existing service area and seeking partnerships to enable system expansion. Our broad focus is on increasing frequency on our highest ridership routes; connecting important community activity centers; enhancing on-time performance and overall system productivity.

The proposed alternatives for fall 2018 include 1) weekday frequency increases; 2) implementation of new services; and 3) the addition of a special fare 31-day pass. Following the public process in June, the approved services will be implemented this fall. Highlights of the proposal are also shown below:

Weekday Frequency Increases

- Route 1: Increase weekday daytime frequency to 15 minutes
- Route 27: Increase weekday daytime frequency to 15 minutes

Implementation – Monday, October 1, 2018

New Services

- New Route 18: Weekday Union Boulevard service from Boulder St. to Academy Blvd.
- New Route 38: Weekday Union Boulevard express-route service from Academy Blvd. to Memorial North Hospital and Children's Hospital
- New Route 40: Weekday express-route service from Voyager Parkway Transfer Center to Pikes Peak Community College–Rampart Campus

Implementation – Monday, October 1, 2018 (Route 40 to be implemented August 27)

Addition of Special Fare 31-Day Pass - Mountain Metropolitan Transit proposes to offer a special fare 31-day pass for \$31.00.

Implementation – Sunday, September 30, 2018

See below for details.

1. WEEKDAY FREQUENCY INCREASES

The following enhancements are proposed for fall 2018:

- Route 1: Increase weekday daytime frequency to 15 minutes (from 30 minutes)
- Route 27: Increase weekday daytime frequency to 15 minutes (from 30 minutes)

Implementation – Monday, October 1, 2018

2. NEW SERVICES

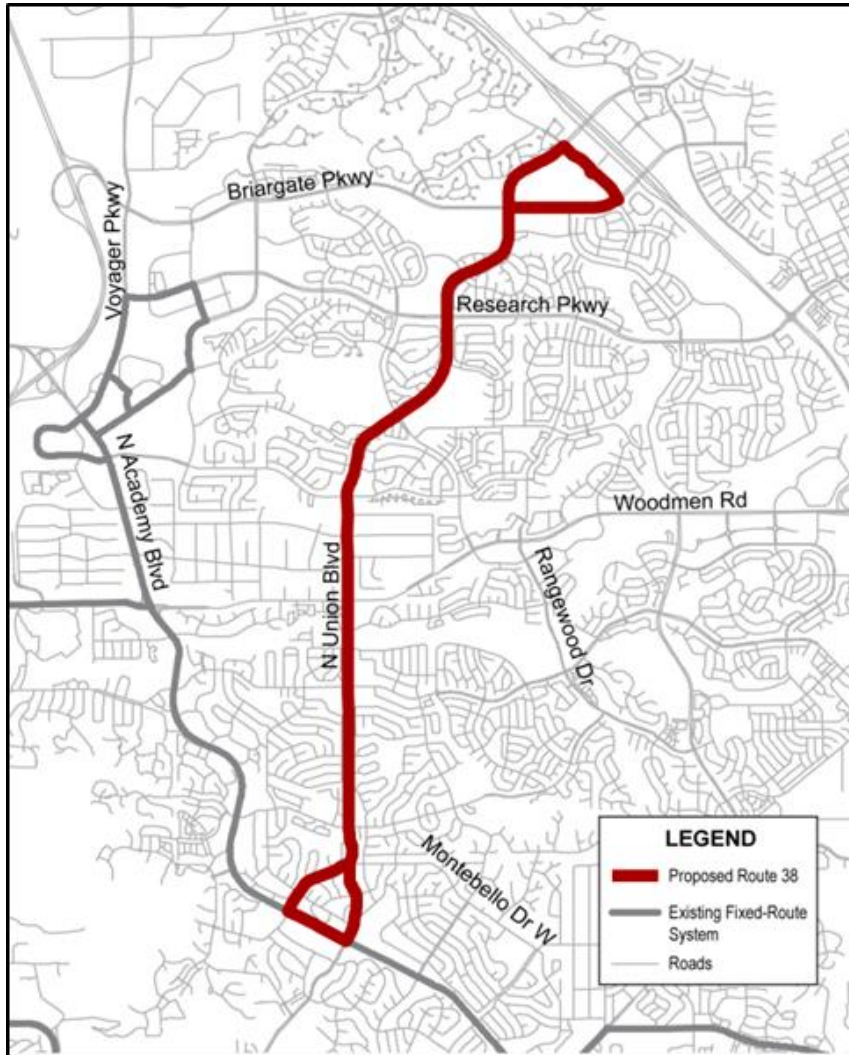
Responding to community need, numerous customer requests, and consistent with our current 2040 Regional Transit Plan, collaborative partnerships were fostered between Mountain Metropolitan Transit and our regional neighbors – Memorial North Hospital, Children’s Hospital, and Pikes Peak Community College – to propose new transit services to central and northern Colorado Springs. The three proposed new routes are detailed below:

- **New Route 18:**
Weekday, 45-minute frequency, daytime route operating on Union Boulevard between Boulder Street in the south and Academy Boulevard in the north. This proposed service fills a north/south gap between the Nevada and Academy corridors. Connections can be made from Route 5 (Boulder St - Citadel) and Route 25 (N Academy Blvd – Voyager Pkwy) since both routes operate with 15-minute frequencies during weekdays. See route map on right.



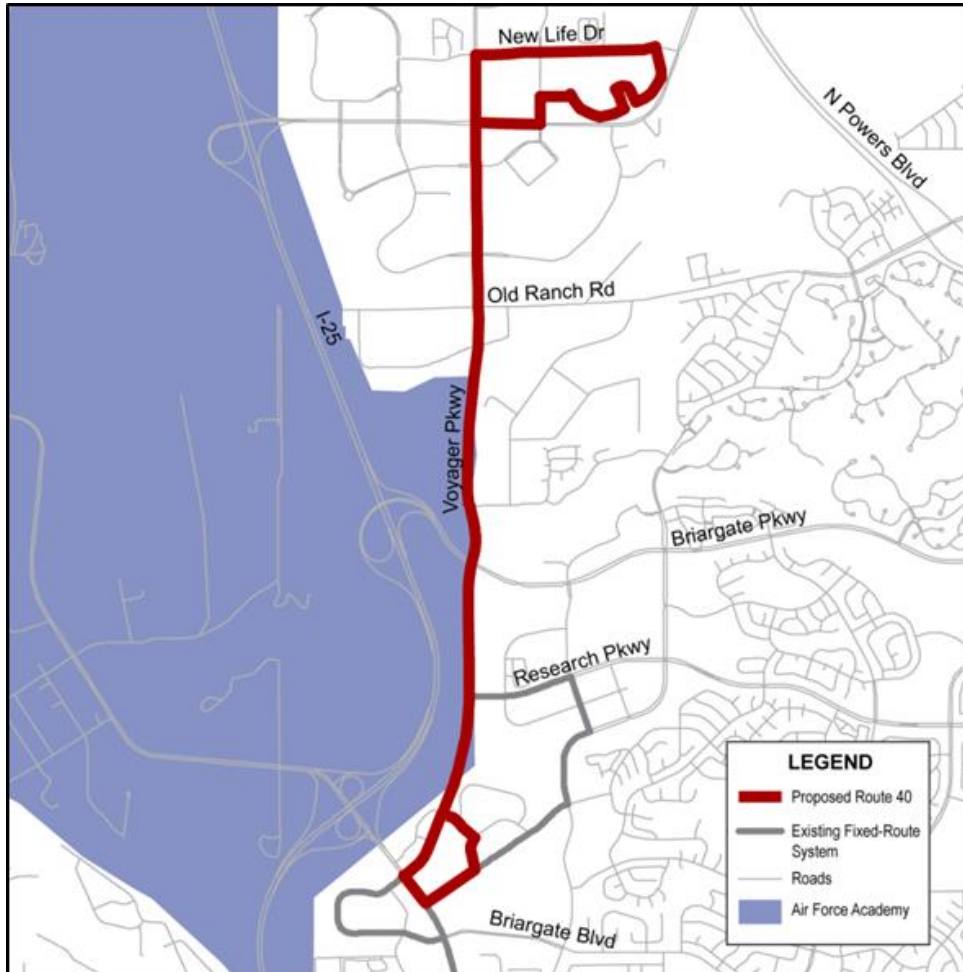
Implementation – Monday, October 1, 2018

- **New Route 38:** Weekday, 45-minute frequency, daytime Union Boulevard express-route service from Academy Boulevard to Memorial North Hospital and Children’s Hospital. Connections can be made from Route 18 (Boulder St – Academy Blvd) or Route 25 (N Academy Blvd – Voyager Pkwy). See route map below.



Implementation – Monday, October 1, 2018

- **New Route 40:** Weekday, 30-minute frequency, express-route service operating on Voyager Parkway from the Voyager Parkway Transfer Center to Pikes Peak Community College–Rampart Campus. Connections to Route 40 can be made from Route 25 (N Academy Blvd – Voyager Pkwy) and Route 39 (Corporate Dr – Voyager Pkwy). See route map below.



Implementation – Monday, August 27, 2018

3. ADDITION OF SPECIAL FARE 31-DAY PASS

A special fare 31-day pass is being proposed. Those eligible for a special fare include: youth (ages 6 to 18; Disabled/Medicare; or seniors (ages 60 and above). Currently, MMT does not offer this fare instrument, but it does offer a full fare 31-day pass for \$63.00. One recommendation being offered by our *Fare Study* is the addition of a special fare 31-day pass. The cost will be \$31.00.

Implementation – Sunday, September 30, 2018

RATIONALE

The alternatives above were assembled after conducting a system-wide technical assessment to identify potential service changes to be implemented in 2018. Several additional alternatives were implemented as part of the spring 2018 service change. The assessment also included an application of transit system performance standards to identify candidate routes for service enhancements.

PROCESS

Public meetings regarding this proposal will be held during the third week of June, and the public comment period will remain open until Friday, June 22, 2018. Final recommendations will be made after completion of the public meetings and the public comment period. Decisions will be made in consideration of the comments received, benefits and other impacts to the community and the riding public, transit system operational requirements, and consistency with the City of Colorado Springs and Mountain Metropolitan Transit's objectives.